

ABUS Jib Cranes: Efficiency at the Centre



The complete range
of pillar and wall jib cranes
for loads up to 6.3 tonnes

ABUS Lifting and Material Flow Technology: The driving force for a more congenial place of work



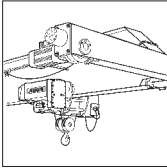
The main objective of ABUS concepts and products is always the same – to help the people who work with them. The aim is to make it easier to handle and lift heavy loads, increasing productivity and providing enhanced working conditions.

ABUS jib cranes are a convincing example of this policy. They assist staff and multiply human effort, handling loads up to 6,300 kg precisely and effortlessly, at the touch of a button. Whether they are mounted on their own pillars or on walls and columns, ABUS jib cranes team up with the appropriate ABUS electric hoists to form high-performance units, providing reliable, far-sighted solutions to your material handling problems.

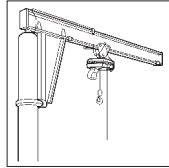


ABUS System Expertise: Single-Point Sourcing for Tailored Systems

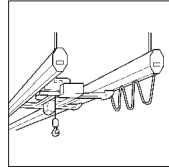
ABUS crane systems and components



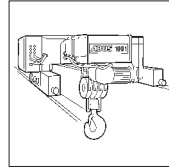
Travelling Cranes



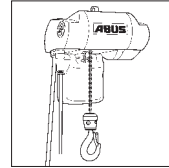
Jib Cranes



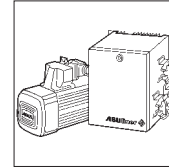
HB-System



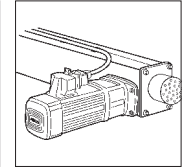
Electric Wire Rope Hoists



Electric Chain Hoists



Electronic Control Systems

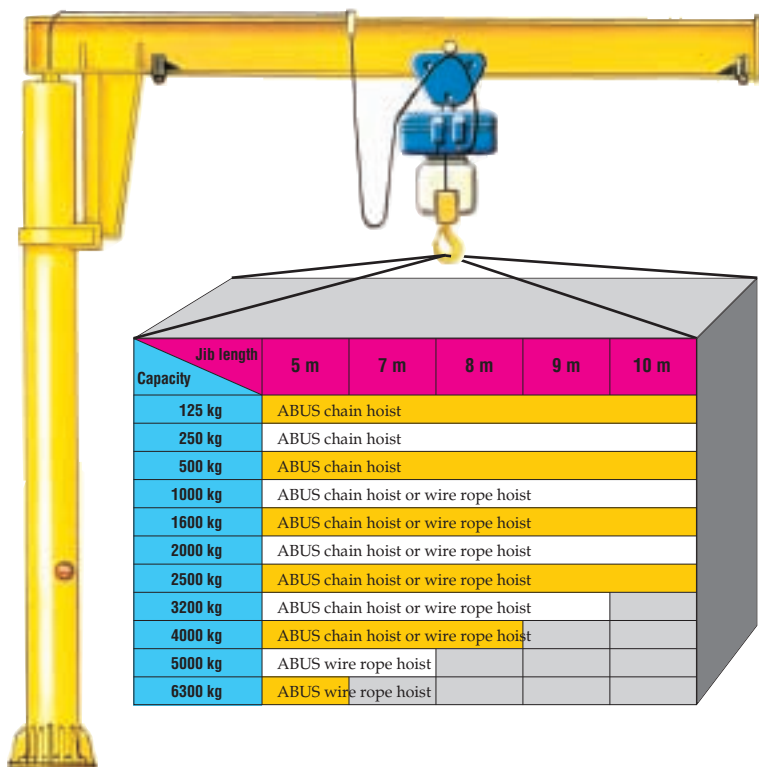


Power Components



ABUS offers a single source for all types of lifting and material handling systems for loads from 80 kg to 100 tonnes clear of the floor. Systems available range from stationary electric chain hoists through jib cranes, monorails, electric wire rope hoists and travelling cranes to complete material handling systems. All ABUS crane systems can be used as stand-alone units but they are also tailored for smooth interaction with each other, from connections using easy plug-in connectors through to maintenance and spare parts stocks. A customer who decides to use ABUS systems can rely on ABUS absolutely.

ABUS Pillar Jib Cranes



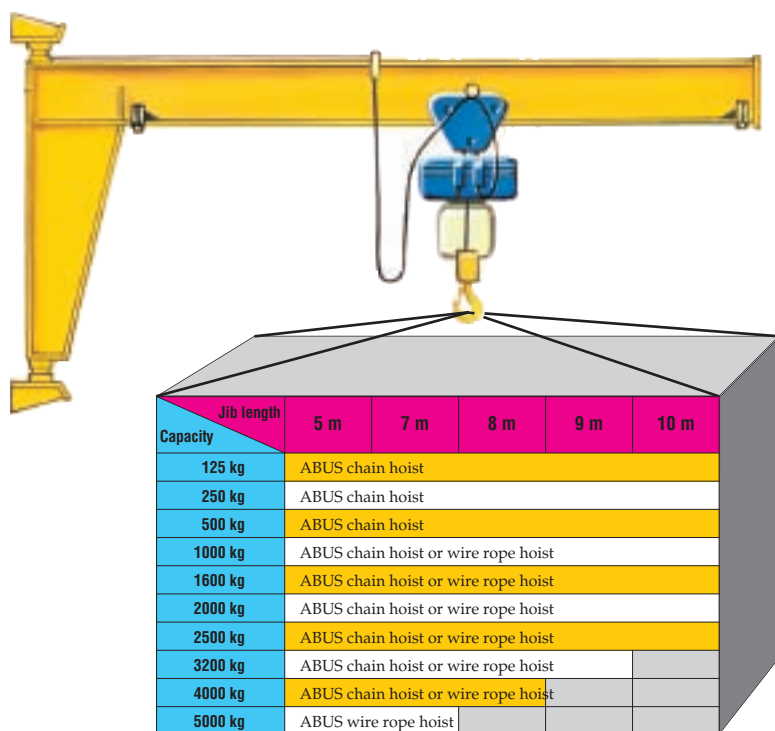
RATED
SLEWING RANGE

infinite x 360°

Pillar Jib Crane Type VS

- medium/heavyweight design (DIN 15018 H2/B3)
- sturdy steel structure with low solid-web jib for high usable crane hook height
- in accordance with VDE codes, accident prevention regulations and machinery protection act
- safety anchoring with sturdy, ribbed base and a large number of anchor bolts
- rated slewing range infinite x 360°
- mechanically shot blasted to DIN 55928 for high corrosion resistance
- single-layer painting RAL 1007 (daffodil yellow)
- complete with electrical systems including lockable mains switch, collector ring body and power supply to the hoist
- detachable jib end plate and movable trolley buffers
- easy assembly of trolley drive
- scope of supply includes anchor bolts, template and plan for foundation design
- for operation in completely enclosed buildings

ABUS Wall Jib Cranes



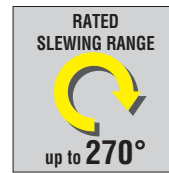
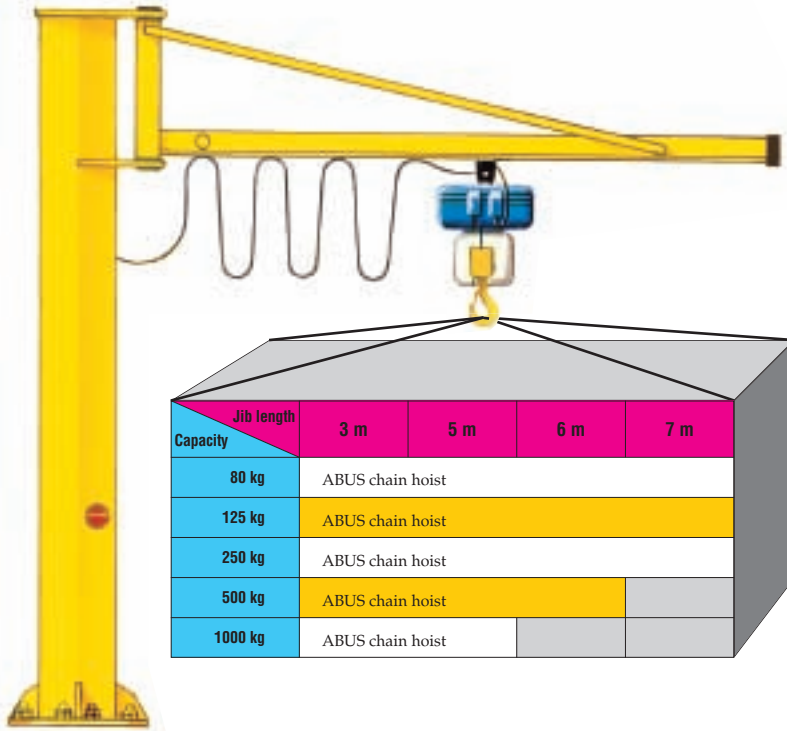
RATED
SLEWING RANGE

up to 180°

Wall Jib Crane Type VW

- medium/heavyweight design (DIN 15018 H2/B3)
- rated slewing range 180°
- sturdy low solid-web jib for high usable crane hook heights
- in accordance with VDE codes, accident prevention regulations and machinery protection act
- mechanically shot blasted to DIN 55928 for high corrosion resistance
- single-layer painting RAL 1007 (daffodil yellow)
- complete with electrical systems including lockable mains switch, collector ring body and power supply to the hoist
- detachable jib end plate and movable trolley buffers
- easy assembly of trolley drive
- scope of supply includes mounting plan
- for operation in completely enclosed buildings

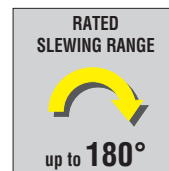
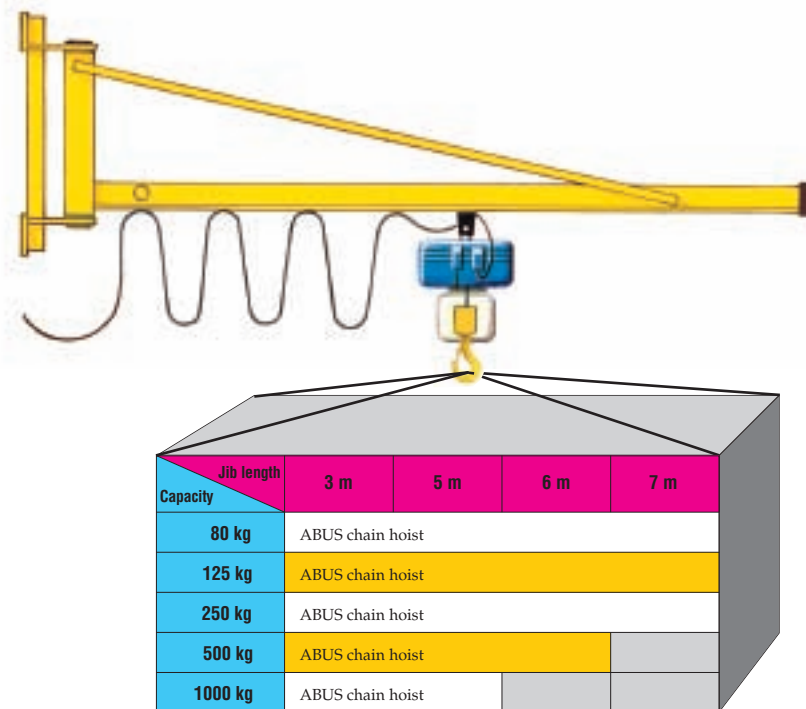
A Strong Arm at the Place of Work



Pillar Jib Crane Type LS

- lightweight design (DIN 15018 H2/B2)
- rated slewing range 270°
- entire jib and pillar made of hollow steel sections
- in accordance with VDE codes, accident prevention regulations and machinery protection act
- mechanically shot blasted to DIN 55928 for high corrosion resistance
- single-layer painting RAL 1007 (daffodil yellow)
- safety anchoring with sturdy, ribbed base
- complete with electrical systems including lockable mains switch and power supply to the hoist
- scope of supply includes anchor bolts, template and plan for foundation design
- for operation in completely enclosed buildings

Units for High Performance with Their Backs to the Wall



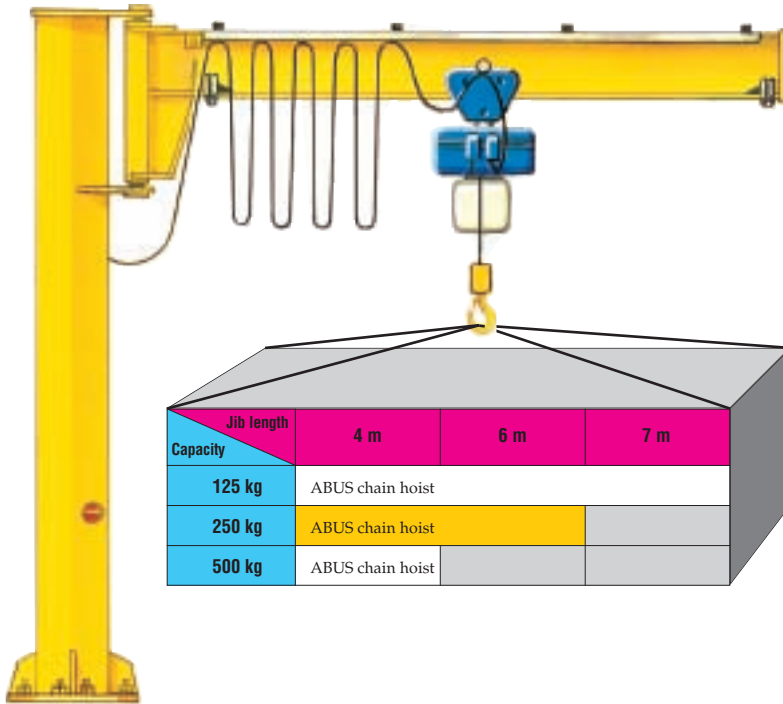
Wall Jib Crane Type LW

- lightweight design (DIN 15018 H2/B2)
- rated slewing range 180°
- jib made from hollow steel sections
- in accordance with VDE codes, accident prevention regulations and machinery protection act
- mechanically shot blasted to DIN 55928 for high corrosion resistance
- single-layer painting RAL 1007 (daffodil yellow)
- complete with electrical systems including lockable mains switch and power supply to the hoist
- scope of supply includes mounting plan
- for operation in completely enclosed buildings

For Durability and Power

Pillar Jib Crane Type LSX

- lightweight design (DIN 15018 H2/B2)
- rated slewing range 270°
- sturdy steel structure with low solid-web jib for high usable crane hook height
- in accordance with VDE codes, accident prevention regulations and machinery protection act
- smooth running jib bearings
- mechanically shot blasted to DIN 55928 for high corrosion resistance
- single-layer painting RAL 1007 (daffodil yellow)
- complete with electrical systems including lockable mains switch and power supply to the hoist
- safety anchoring with sturdy, ribbed foot
- detachable jib end plate and movable trolley buffers
- easy assembly of trolley drive
- scope of supply includes anchor bolts, template and plan for foundation design
- for operation in completely enclosed buildings

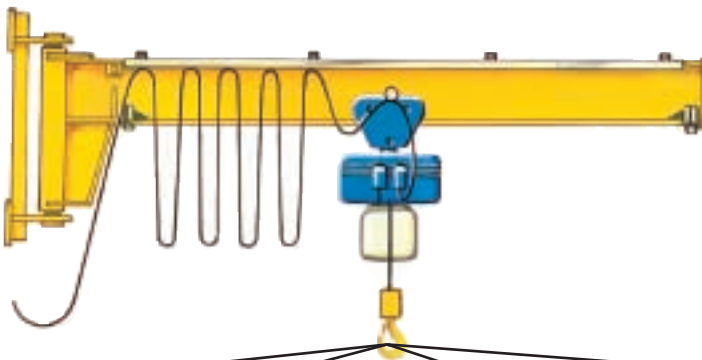


RATED
SLEWING RANGE
up to **270°**

Designed for the Future

Wall Jib Crane Type LWX

- lightweight design (DIN 15018 H2/B2)
- rated slewing range 180°
- sturdy low solid-web jib for high usable crane hook height
- in accordance with VDE codes, accident prevention regulations and machinery protection act
- detachable jib end plate and movable trolley buffers
- easy assembly of trolley drive
- mechanically shot blasted to DIN 55928 for high corrosion resistance
- single-layer painting RAL 1007 (daffodil yellow)
- complete with electrical systems including lockable mains switch and power supply to the hoist
- scope of supply includes mounting plan
- for operation in completely enclosed buildings



RATED
SLEWING RANGE
up to **180°**



A typical ABUS feature: “added-value” solutions from a single source

If you plan a jib crane with ABUS, there are really no limits. Everything you need to turn a simple crane into a convenient complete solution is available – from a single supplier. ABUS makes planning easier and helps you to cut costs, not only when buying your crane but also in the years which follow. Because the whole is simply worth more than the sum of its parts, it also pays to take a close look at the performance features and cost advantages of ABUS extras, components and accessories.

1 Collector Ring Body

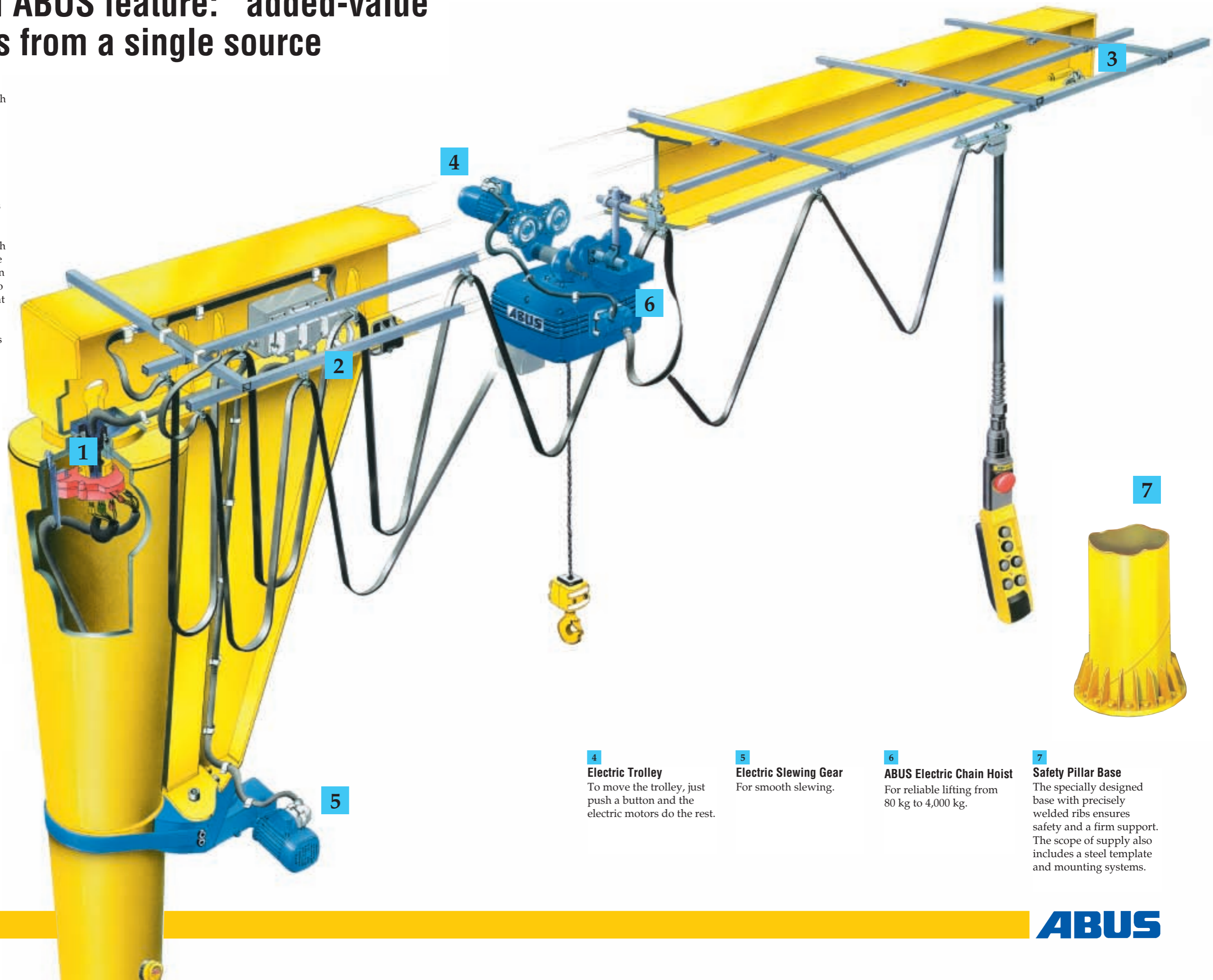
Power supply via slip rings for infinite 360° slewing.

2 Easy Plug-In Connectors

Easy plug-in connectors for all connections, for rapid trouble-free connection and maintenance and faster, safer working.

3 Bolted end Connection Plate

For rapid mounting of trolley without dismantling.



4 Electric Trolley
To move the trolley, just push a button and the electric motors do the rest.

5 Electric Slewing Gear
For smooth slewing.

6 ABUS Electric Chain Hoist
For reliable lifting from 80 kg to 4,000 kg.

7 Safety Pillar Base
The specially designed base with precisely welded ribs ensures safety and a firm support. The scope of supply also includes a steel template and mounting systems.

ABUS Hoists: Packed with Power for Jib Cranes



Complete with
precision lifting
speed

The ABUS Range of Electric Chain Hoists

ABUS electric chain hoists provide excellent lifting power in the 80 to 4,000 kg class. Different sizes, with lifting speeds from 1 to 20 m/min, are available. Thanks to their compact size and the precision lifting speed which is standard equipment, ABUS electric chain hoists move loads both rapidly and smoothly.



The ABUS GM Electric Wire Rope Hoist Range

ABUS GM electric wire rope hoists cover the essential load range from 1 to 100 tonnes. Five basic models are available, all with main and precision lifting speeds as standard equipment. And all these units are small. All components feature endurance – from motors to ropes, from gears to brakes, from power systems to electronic circuitry.

ABUS Jib Crane Components: Helping Hands which Really Ease the Load



ABUS Electric Trolleys

Electric trolleys are always a help, but they are highly recommended for loads above 500 kg or jib lengths above 4 m. ABUS electric trolleys have two speeds as a standard feature.



ABUS Electric Slewing Gears

ABUS electric slewing gears permit precise positioning, increasing safety at work. They are especially recommended for loads above 500 kg and jib lengths above 6 m. The standard features include two slewing speeds.



Mobile Controls

ABUS jib cranes and their hoists are controlled using an ABUCommander. If the pendant control is mounted on a separate rail, it can be moved independently of the hoist. Mobile controls are essential items of equipment combined with an electric trolley and/or slewing gear.

Steel Base Plates

Pillar jib cranes are normally installed on foundations with anchor bolts grouted to the foundation. However, there is often insufficient space for a foundation. In such cases, ABUS has a safe and economical alternative: installation of the crane on a steel base plate. The savings in terms of cost and space can amount to up to 50 %.



ABUS Jib Cranes in Practice: A creative blend of Material Handling Systems



In a large number of companies, ABUS jib cranes have proved themselves in practice as the centre points of productive and efficient materials handling solutions. They are widely used in trade, manufacturing industries and service

organisations. Wherever they are used, ABUS jib cranes are efficient partners performing their tasks reliably and easing the load on the people who use them.

Your direct line to ABUS

Copy – complete – fax

... by Fax!

Company _____

Post code _____

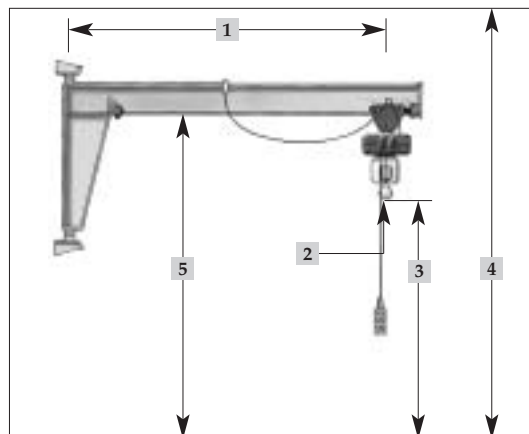
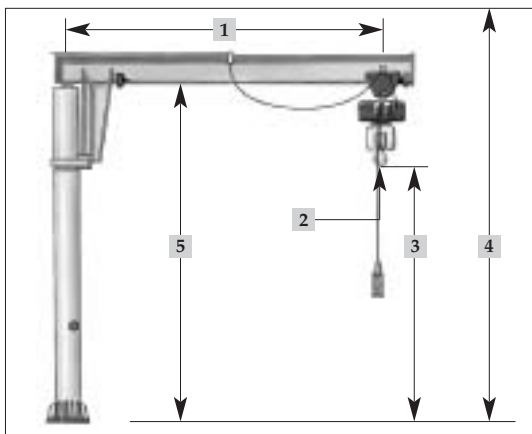
Name _____

Tel./extension _____

Address _____

Telefax _____

Planning a Jib Crane – made easy !



Column jib crane data:

1 jib length _____ mm

2 capacity _____ kg

3 highest hook position required _____ mm

4 clear building height _____ mm

5 height of lower edge of jib _____ mm

Type of mounting required: (please tick, as appropriate)

on foundation, with anchor bolts

on floor, with base plate

on reinforced concrete roof

Wall jib crane data:

1 jib length _____ mm

2 capacity _____ kg

3 highest hook position required _____ mm

4 clear building height _____ mm

5 height of lower edge of jib _____ mm

Type of mounting required: (please tick, as appropriate)

on steel support

on reinforced concrete support

on reinforced concrete wall

Slewing gear:

manual

electric

Trolley:

push trolley

electric trolley

Who will install the crane?

ABUS service

the customer

Implementation time frame:

short term

medium term

long term (investment planning)

Australia – Eilbeck Cranes

6 Moorlands Road · Ingleburn NSW 2565 · Ph. 61 (0)2 9829 3700 · fax 61 (0)2 9829 3500 · e-mail: t.eilbeck@eilbeckcranes.com.au
 23 Jackson Street · Bassendean WA 6054 · Ph. 61 (0)8 9279 4800 · fax 61 (0)8 9378 3689 · e-mail: j.hodges@eilbeckcranes.com.au
 12 Sudbury Street · Darra QLD 4076 · Ph. 61 (0)7 3271 3790 · fax 61 (0)7 3271 3791 · e-mail: p.durrington@eilbeckcranes.com.au

Australia – Modular Cranes

33 Colbert Road · Cambellfield VIC 3061 · Ph. 61 (0)3 9357 9877 · fax 61 (0)3 9357 9822 · e-mail: tony@modularcranes.com.au

New Zealand – Baker Cranes · 10 Aerovista Place · Wiri, Auckland · Ph. 64 (0)9 277 0736 · fax 64 (0)9 277 0736 · e-mail: baker.c@xtra.co.nz

Vietnam – AVC · 206 Road · Lac Hong Commune · Van Lam District · Hung Yen Province · Vietnam

Ph. 84 321 980 410 · fax 84 321 980 411 · e-mail: avc-abus@hn.vnn.vn